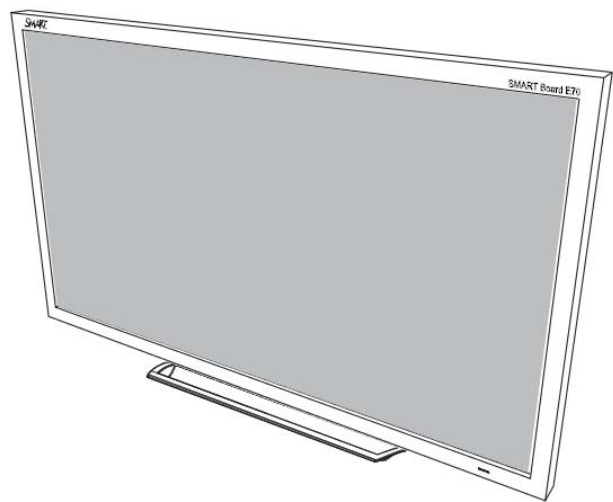




SMART[®]



Service Parts Diagrams

**For Model:
SPNL-4084**

Service Parts Diagrams Revision History

Revision 1 - March, 2016

- New document

Standard Warranty Terms

Base product: Two-year limited equipment warranty

First Customer Ship: February, 2016

SMART Technologies

3636 – Research Road NW

Calgary, AB T2L 1Y1

CANADA

Support +1.403.228.5940 or Toll Free 1.866.518.6791 (Canada/U.S.)

Support Fax +1.403.806.1256

www.smarttech.com/contactserviceparts www.smarttech.com

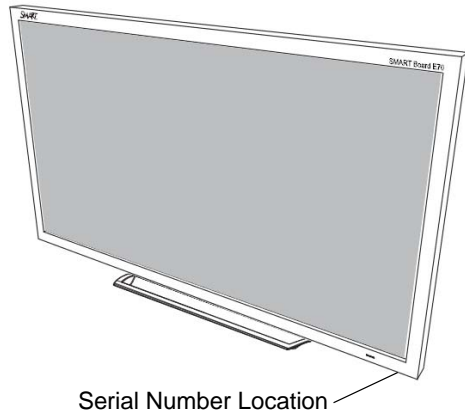
The SMART logo is rendered in a bold, black, sans-serif font. The letters are thick and closely spaced, with a registered trademark symbol (®) positioned at the top right of the letter 'T'.

Service Parts Diagrams for the SPNL-4084

Identifying Your Product Using the Serial Number 1
Ordering Parts 1
SPNL-4084 Parts 2

Identifying Your Product Using the Serial Number

To make sure that you have the correct service parts diagrams, you must verify the serial number of your SPNL-4084. The serial number will be located on the right underside of the bottom bezel. An example of the serial number format is shown below.



Unique Serial Number
|
M101IW02E3036

Ordering Parts

Customers

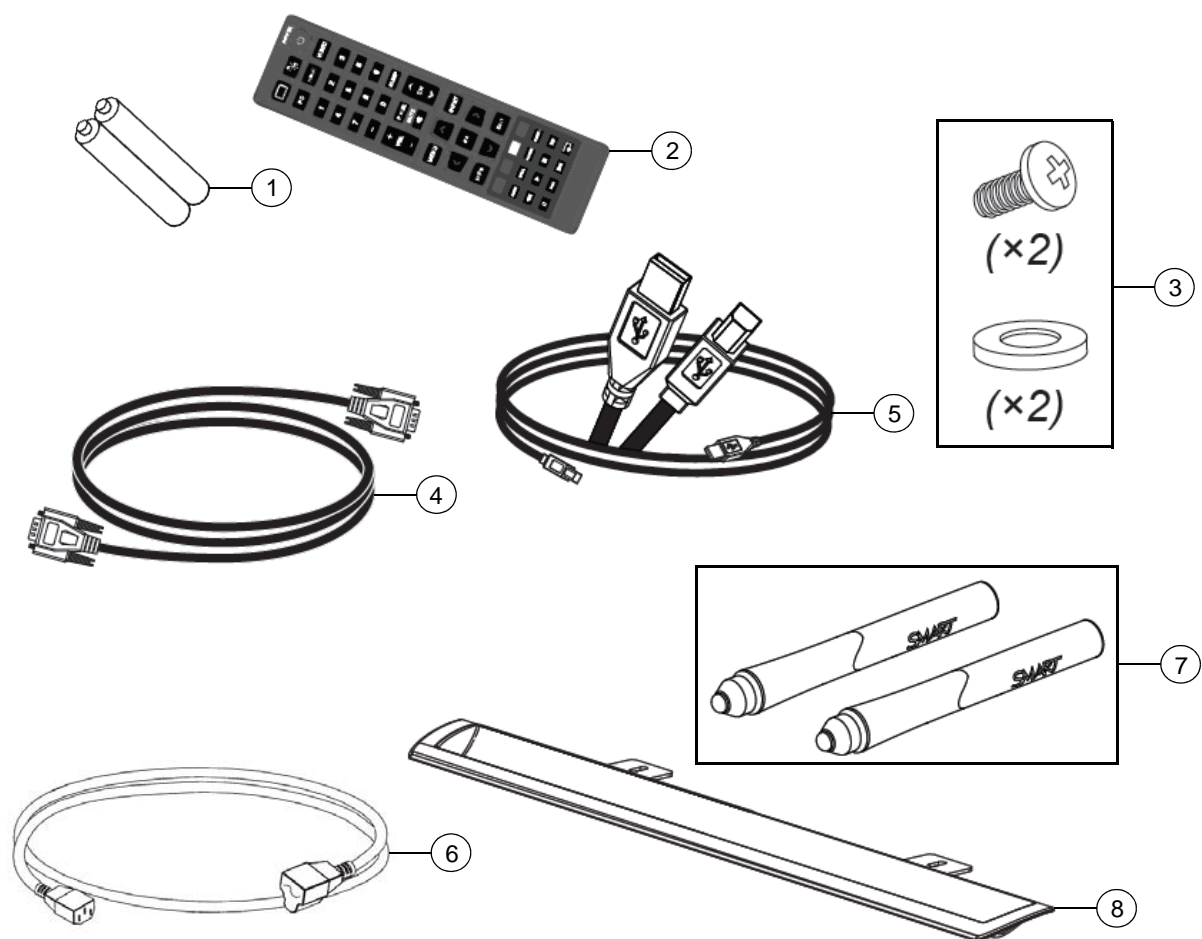
To order any of the parts in these service parts diagrams, contact your local reseller. To find a reseller near you, visit www.smarttech.com/where.

Dealers and Distributors

For specific technical and pricing enquiries in regards to these diagrams please contact our service parts department. Pricing is also available on-line via the SOURCE website (source.smarttech.com).

Web Form: www.smarttech.com/contactserviceparts
Phone: 1.888.42.SMART
International: +1.403.245.0333

SPNL-4084 Parts



Item	Part No.	Qty	Description
1	01-00257	2	Battery, AAA
2	1021284	1	Assembly, remote control, SPNL-4000 series NOTE: Includes item 1.
3	1021689	1	Hardware kit, pen ledge
4	1018853	1	Cable, video, HD15 male to HD15 male 6' (1.8 m)
5	93-00828-20	1	Cable, USB, A-B, 16' (5.0 m)
6	1022063	1	Cable, power, North America, 8' (2.4 m)
6	93-055	1	Cable, power, United Kingdom, 8' (2.4 m)
6	93-054	1	Cable, power, Europe, 8' (2.4 m)
6	93-056	1	Cable, power, Australia, 8' (2.4 m)
7	RPEN-SBM6	1	Replacement Pens for SMART Board SBM600 and SPNL-4000 Series - Set of Two
8	1028239	1	Pen tray