



LDICOA12A

MSRP: **299,- €**

Dealer price: **209,- €**

Availability: **Q3 2019**

LDICOA12ABT

MSRP: **349,- €**

Dealer price: **239,- €**

Availability: **Q3 2019**

ICOA 12A (BT)

12" ACTIVE & PASSIVE COAXIAL PA SPEAKER
(LD ICOA 12 BT WITH BLUETOOTH)

Features

- 126 dB max. SPL and 300-watt RMS performance
- Rotatable CD-Horn (BEM-optimised)
- For horizontal and vertical application
- Coaxial driver arrangement (true point source)
- Real Full-range capability
- Horn loaded woofer
- 2 line/mic input channels with individual gain control plus mono mix output
- Highly-efficient digital amplifier
- DynX DSP with 4 application presets
- 3 Band EQ
- Bluetooth® streaming (Only BT Model)
- 36 mm dual tilt stand attachment with 0° and 5° tilt angle
- 4 handles with ergonomic rubber surface for better grip
- 2 front handles for fast setup
- 55° Monitor angle
- Heavy-Duty grill



LDICOA15A

MSRP: **349,- €**

Dealer price: **239,- €**

Availability: **Q3 2019**

LDICOA15ABT

MSRP: **399,- €**

Dealer price: **269,- €**

Availability: **Q3 2019**

ICOA 15A (BT)

15" ACTIVE & PASSIVE COAXIAL PA SPEAKER
(LD ICOA 15 BT WITH BLUETOOTH)

Features

- 128 dB max. SPL and 300-watt RMS performance
- Rotatable CD-Horn (BEM-optimised)
- For horizontal and vertical application
- Coaxial driver arrangement (true point source)
- Real Full-range capability
- Horn loaded woofer
- 2 line/mic input channels with individual gain control plus mono mix output
- Highly-efficient digital amplifier
- DynX DSP with 4 application presets
- 3 Band EQ
- Bluetooth® streaming (Only BT Model)
- 36 mm dual tilt stand attachment with 0° and 5° tilt angle
- 4 handles with ergonomic rubber surface for better grip
- 2 front handles for fast setup
- 55° Monitor angle
- Heavy-Duty grill

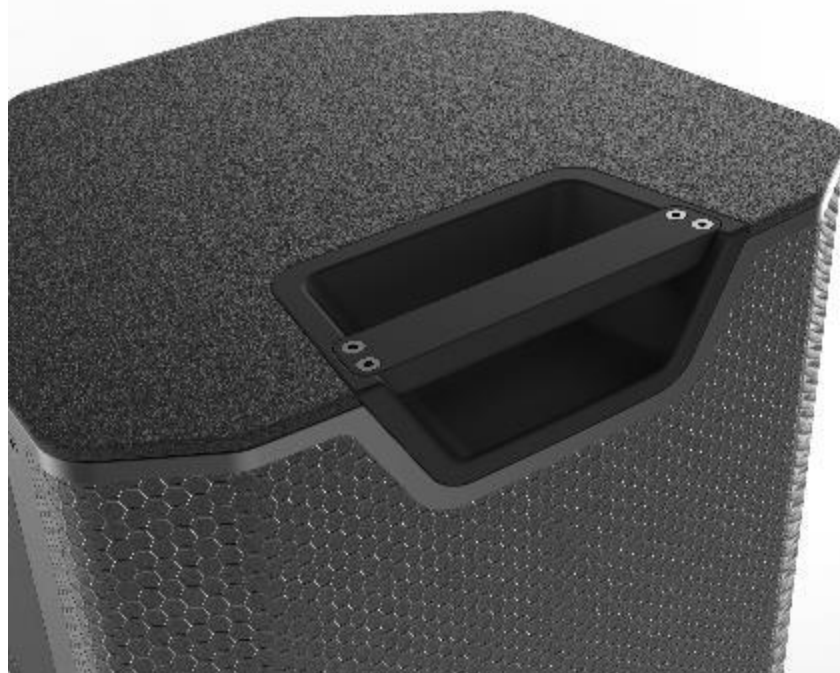
ICOA 12A (BT) / ICOA 15A (BT)



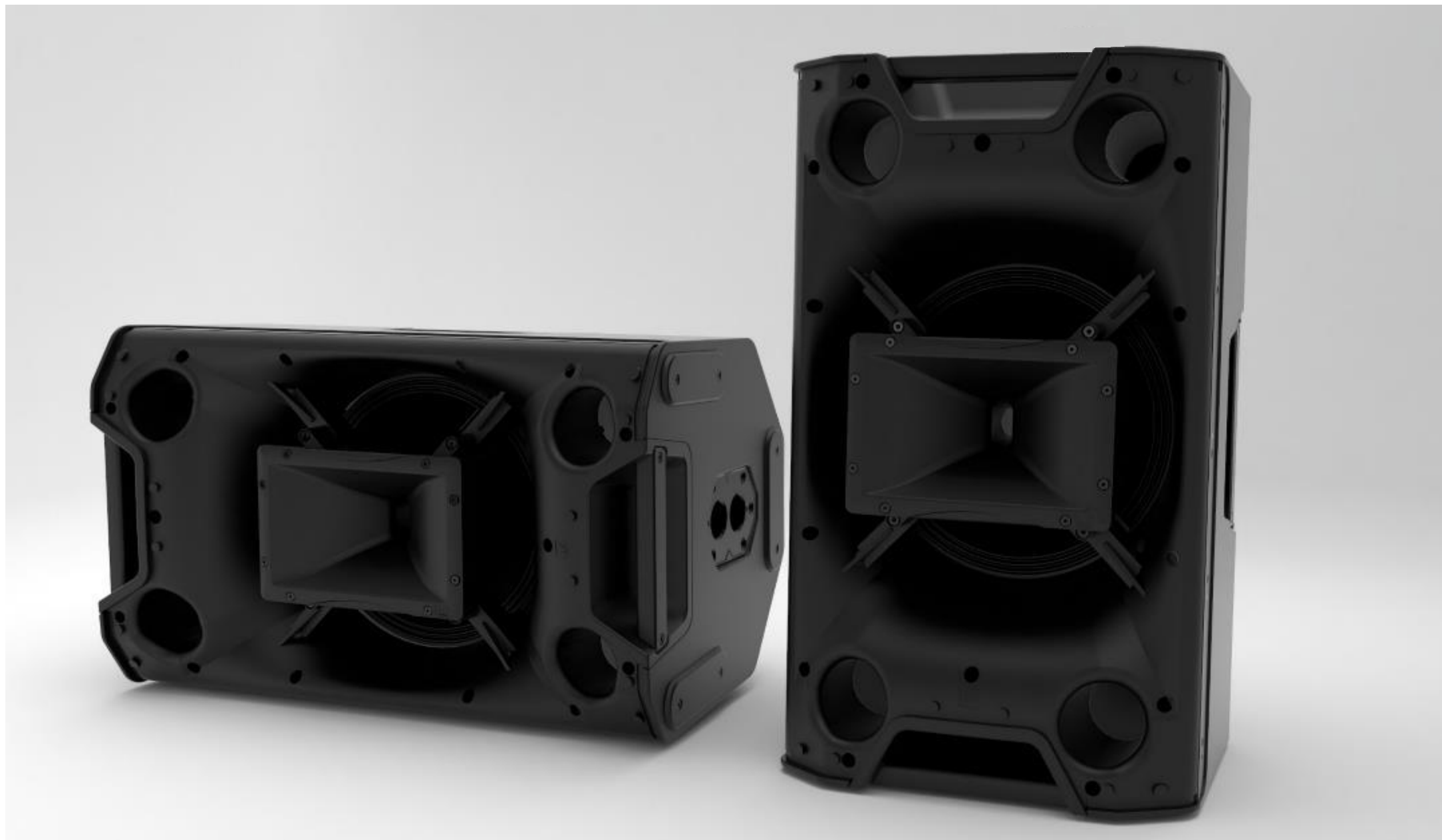
IC0A 12A (BT) / IC0A15A (BT)



IC0A 12A (BT) / IC0A 15A (BT)



ICOA 12A (BT) / ICOA 15A (BT)



MARKET COMPARISON

ICOA 12A

	LD ICOA 12 A	JBL EON 612	EV ZLX 12P	dB B-HYPE 12	ALTO TS 312	MACKIE THUMP 12A
						
Power (RMS)	300 W	500 W	250 W	200W	1000W	650W
Peak power	1200 W	1000 W	1000 W	400W	2000W	1300W
Amplifier	Class D	Class D	Class D	Class D	Class D	Class D
Dispersion	90 x 50°	100 x 60°	90 x 60°	90 x 60°	90 x 60°	90 x 60°
Frequency response	50 Hz – 20kHz	48 Hz – 20 kHz	55 Hz – 20 kHz	55 Hz – 20 kHz	46 Hz – 22 kHz	50 Hz – 23 kHz
Max. SPL	126 dB	126 dB	125 dB	126 dB	128 dB	126 dB
Crossover Frequency	2 kHz	1.8 kHz	2.1 kHz	2.1 kHz	2 kHz	-
Coaxial	YES	NO	NO	NO	NO	NO
Horn loaded woofer	YES	NO	NO	NO	NO	NO
Flyware	6 x M10 & accessories	3 x M10	NO	NO	3 x M10	3 x M10 & accessories
Pole	Dual- Pole	1	1	1	1	1
Weight	18 kg	15,6 kg	15,6 kg	13,9 kg	16,3 kg	13,2 kg
Measurements (W x H x D)	373 x 623 x 394 mm	407 x 690 x 347 mm	356 x 610 x 356 mm	350 x 645 x 330 mm	354 x 605 x 350 mm	358 x 615 x 356 mm
Price Europe	299 €	369 €	356 €	249 €	299 €	255 €
Price USA	299 \$	349 \$	399 \$	299 €	299 \$	299 \$

MARKET COMPARISON - BLUETOOTH

ICOA 12A BT

	LD ICOA 12 BT	EV ZLX 12BT	ALTO TS 212 W	MACKIE THUMP 12BST
				
Power (RMS)	300 W	250 W	550 W	650 W
Peak power	1200 W	1000 W	1100 W	1100 W
Amplifier	Class D	Class D	Class D	Class D
Dispersion	90 x 50°	90 x 60°	90 x 60°	90 x 60°
Frequency response	50 Hz – 20 kHz	55 Hz – 20 kHz	46 Hz – 22 kHz	50 Hz – 23 kHz
Max. SPL	126 dB	125 dB	128 dB	126 dB
Crossover Frequency	2 kHz	2.1 kHz	2 kHz	-
Coaxial	YES	NO	NO	NO
Horn loaded woofer	YES	NO	NO	NO
Flyware	6 x M10 & accessories	NO	3 x M10	3 x M10 & accessories
Pole	Dual- Pole	1	1	1
Weight	18 kg	17,1 kg	13,8 kg	13,3 kg
Measurements (W x H x D)	373 x 623 x 394 mm	415 x 675 x 422 mm	357 x 591 x 351 mm	358 x 615 x 356 mm
Price Europe	349 €	398 €	333 €	346 €
Price USA	349 \$	449 \$	299 \$	349 \$

MARKET COMPARISON

ICOA 15A

	LD ICOA 15 A	JBL EON 615	EV ZLX 15P	dB B-HYPE 15	ALTO TS 215	MACKIE THUMP 15A
						
Power (RMS)	300 W	500 W	250W	200W	550W	650W
Peak power	1200 W	1000 W	1000W	400W	1100W	1300W
Amplifier	Class D	Class D	Class D	Class D	Class D	Class D
Dispersion	90 x 50°	100 x 60°	90 x 60°	90 x 60°	90 x 60°	90 x 60°
Frequency response	48 Hz – 20 kHz	48 Hz - 20 kHz	42 Hz – 20 kHz	51 Hz – 20 kHz	50 Hz – 20 kHz	32 Hz – 23 kHz
Max. SPL	128 dB	126 dB	127 dB	126,5 dB	129 dB	127 dB
Crossover Frequency	2 kHz	1.8 kHz	1.7 kHz	2.1 kHz	2 kHz	-
Coaxial	YES	NO	NO	NO	NO	NO
Horn loaded woofer	YES	NO	NO	NO	NO	NO
Flyware	6 x M10 & accessories	3 x M10	NO	NO	3 x M10	3 x M10 & accessories
Pole	Dual- Pole	1	1	1	1	1
Weight	20 kg	15,0 kg	17,3 kg	17,4 kg	15 kg	15,8 kg
Measurements (W x H x D)	415 x 695 x 414 mm	380 x 664 x 316 mm	423 x 685 x 383 mm	415 x 725 x 391 mm	396 x 652 x 357 mm	442 x 686 x 356 mm
Price Europe	349 €	399 €	429 €	299 €	388 €	298 €
Price USA	349 \$	399 \$	499 \$	-	-	349 \$

MARKET COMPARISON - BLUETOOTH

ICOA 15A BT

	LD ICOA 15 BT	EV ZLX 15BT	ALTO TS 215 W	MACKIE THUMP 15BST
				
Power (RMS)	300 W	250 W	550 W	650 W
Peak power	1200 W	1000 W	1100 W	1300 W
Amplifier	Class D	Class D	Class D	Class D
Dispersion	90 x 50°	90 x 60°	90 x 60°	90 x 60°
Frequency response	48 Hz – 20 kHz	42 Hz – 20 kHz	50 Hz – 20 kHz	32 Hz – 23 kHz
Max. SPL	128 dB	127 dB	129 dB	127 dB
Crossover Frequency	2 kHz	1.7 kHz	2 kHz	-
Coaxial	YES	NO	NO	NO
Horn loaded woofer	YES	NO	NO	NO
Flyware	6 x M10 & accessories	NO	3 x M10	3 x M10 & accessories
Pole	Dual- Pole	1	1	1
Weight	20 kg	17,3 kg	15,8 kg	16 kg
Measurements (W x H x D)	415 x 695 x 414 mm	423 x 685 x 383 mm	396 x 652 x 357 mm	442 x 686 x 356 mm
Price Europe	399 €	498 €	388 €	369 €
Price USA	399 \$	549 \$	-	449 \$