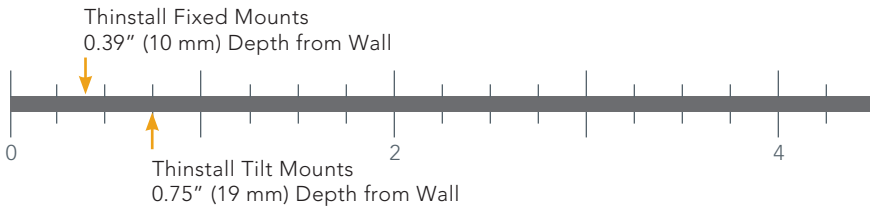




DON'T JUST INSTALL, THINSTALL™.



Ultra-Thin Mounts For Ultra-Thin TVs

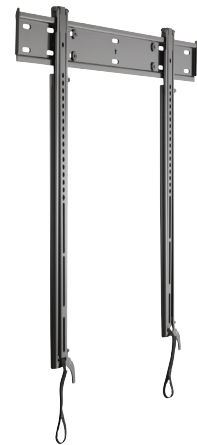
Chief's new Thinstall Series Fixed and Tilt Wall Mounts are designed to complement the low profile of new ultra-thin flat panel TVs. The fixed mount collapses to 0.39" (10 mm), and the tilt mount collapses to 0.75" (19 mm) while offering 12° of fingertip tilt.



Glide Lock™ Latching System
Tool-less latching for
faster installation
PATENT-PENDING



LTTU™



Large Fixed Mount LSTU™



Easy Cable Access
Unique cable kickstand allows easy
cable access when needed



In-Wall Box
Optional storage box for a
clean installation, for more information,
see accessories on back

Velcro® Straps
Retract the cable kickstand
by simply pulling the straps



THININSTALL SERIES

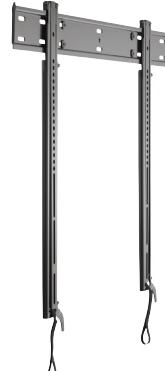
MOUNTS FOR ULTRA-THIN TVs



LTTU™



MTTU™



LSTU™



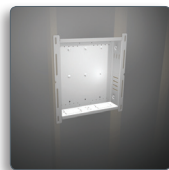
MSTU™

SPECIFICATIONS

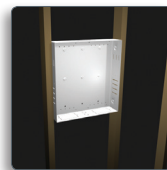
Model	TV Size Range	Depth from Wall	Hole Pattern	Max Screen Thickness	Tilt	Weight Capacity
THININSTALL Series Fixed & Tilt Mounts - for ultra-thin TVs						
LTTU	37 - 63"	0.75" (19 mm)	200 x 200 mm to 800 x 500 mm	2.0" (50.8 mm)	12°	100 lbs (45.4 kg)
MTTU	26 - 47"	0.75" (19 mm)	100 x 100 mm to 600 x 400 mm	2.0" (50.8 mm)	12°	100 lbs (45.4 kg)
LSTU	37 - 63"	0.39" (10 mm)	200 x 200 mm to 800 x 500 mm	5.0" (127 mm)	—	125 lbs (56.7 kg)
MSTU	26 - 47"	0.39" (10 mm)	100 x 100 mm to 600 x 400 mm	5.0" (127 mm)	—	125 lbs (56.7 kg)

RECOMMENDED ACCESSORIES

Chief's In-Wall Accessories simplify installation and maximize the ultra-low profile of Thinstall mounts. Available in regular and powered models, these accessories provide the needed space for electrical connections and components.



PAC510™
Retrofit Box



PAC515™
New Construction Box



PAC520™*
Multiple Option New Construction Box
(shown with Power Filter Kit, PACPC1™)



PAC521P™
In-Wall Box with Power Outlet Conditioner

* Cables and Power Filter Kit not included with PAC520

end-user focused

faster installation

superior service

proven quality

CHIEF MANUFACTURING
USA/INTERNATIONAL
CHIEF MOUNTS CANADA
MILESTONE EUROPE B.V.
MILESTONE ASIA PACIFIC LTD

■ A DIVISION OF MILESTONE AV TECHNOLOGIES ■ www.chiefmfg.com
 ■ P 800.582.6480/952.894.6280 ■ F 877.894.6918/952.894.6918 ■ chief@chiefmfg.com
 ■ P 877.345.4329 ■ F 888.377.5314 ■ info@chiefmounts.ca
 ■ P 31 (0)40 23 24 700 ■ F 31 (0)40 23 24 710 ■ europe@milestone.com
 ■ P 852 2145 4099 ■ F 852 2145 4477 ■ asia.chief@milestone.com

©2009 Milestone AV Technologies, a Duchossois Group Company. 800243B 03/09. Chief is a registered trademark of Milestone. All other brand names or marks are used for identification purposes and are trademarks of their respective owners. All patents are protected under existing designations. Other patents pending.

